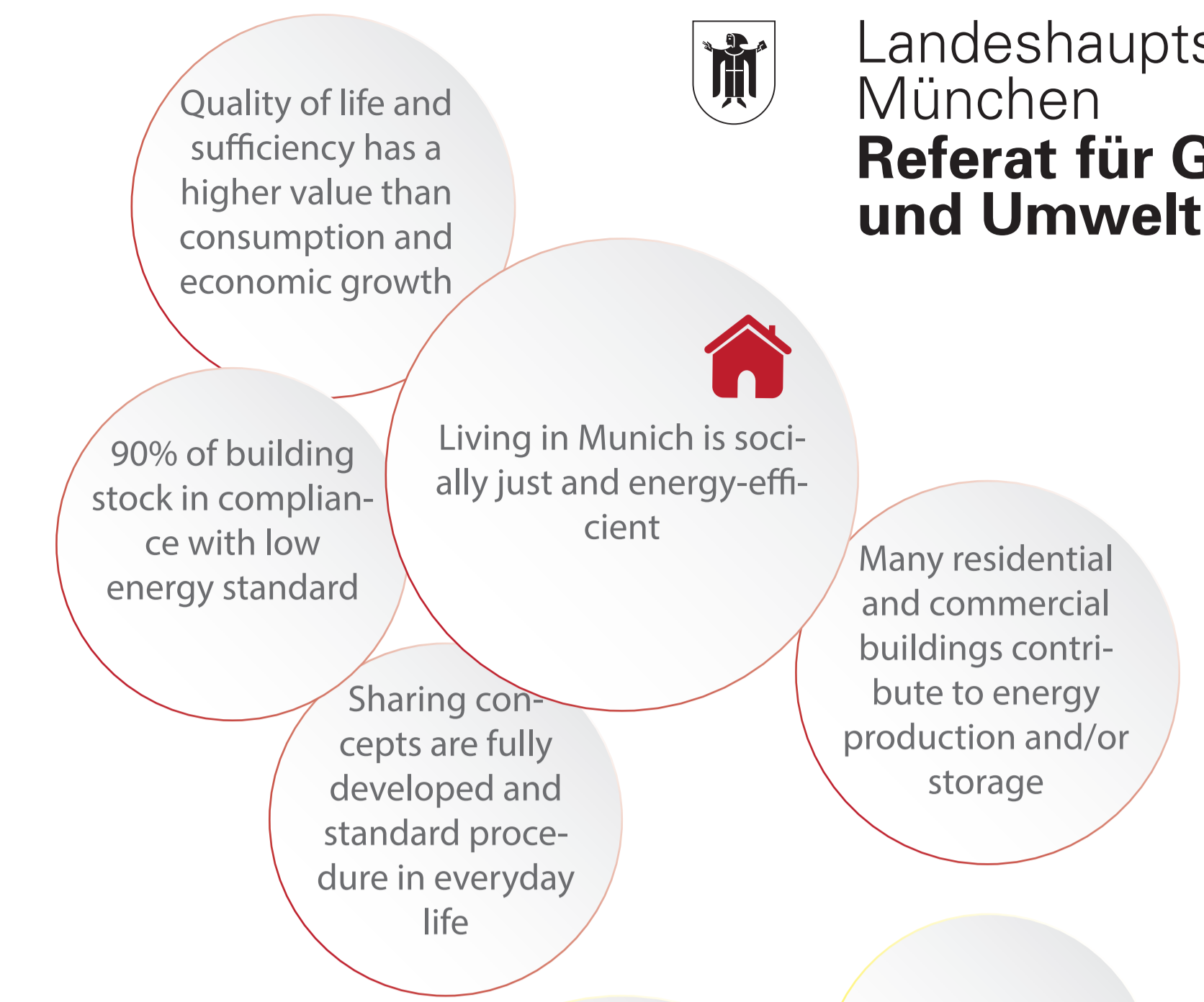
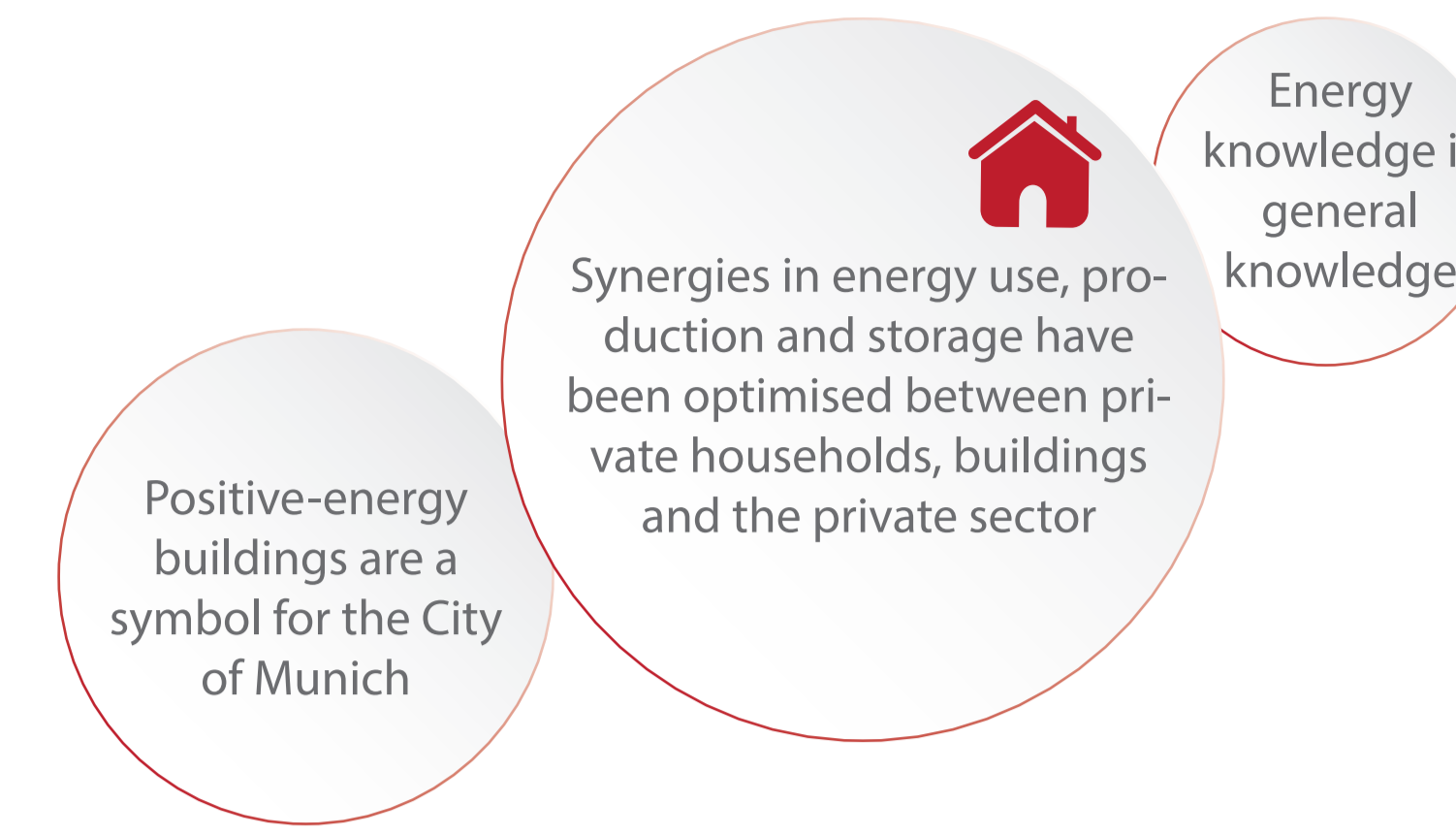
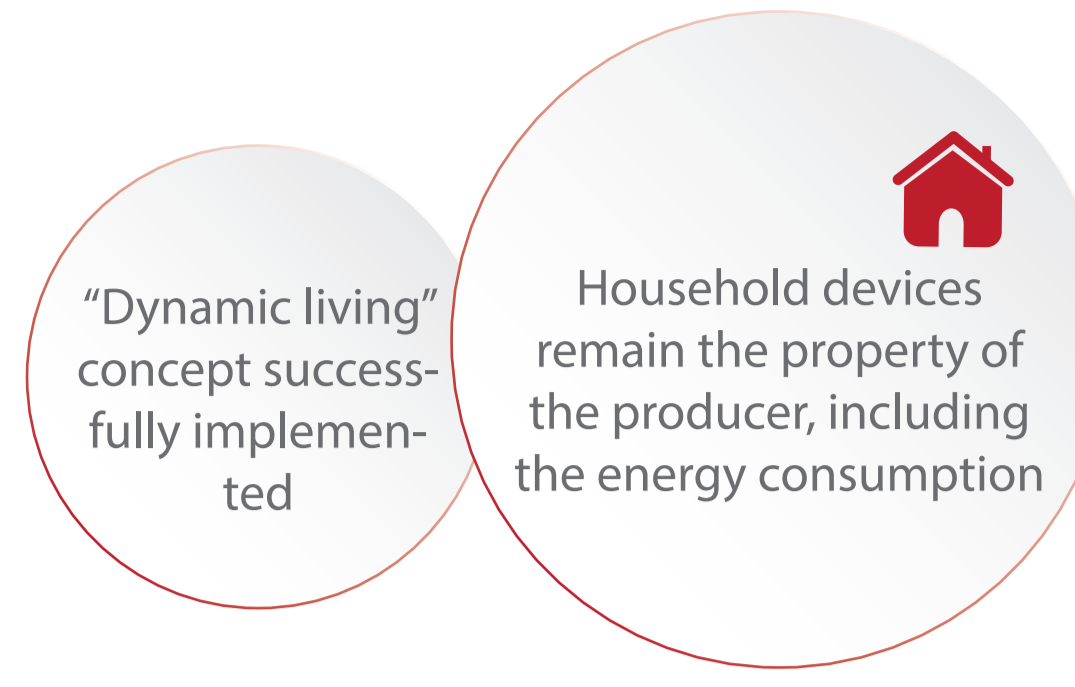
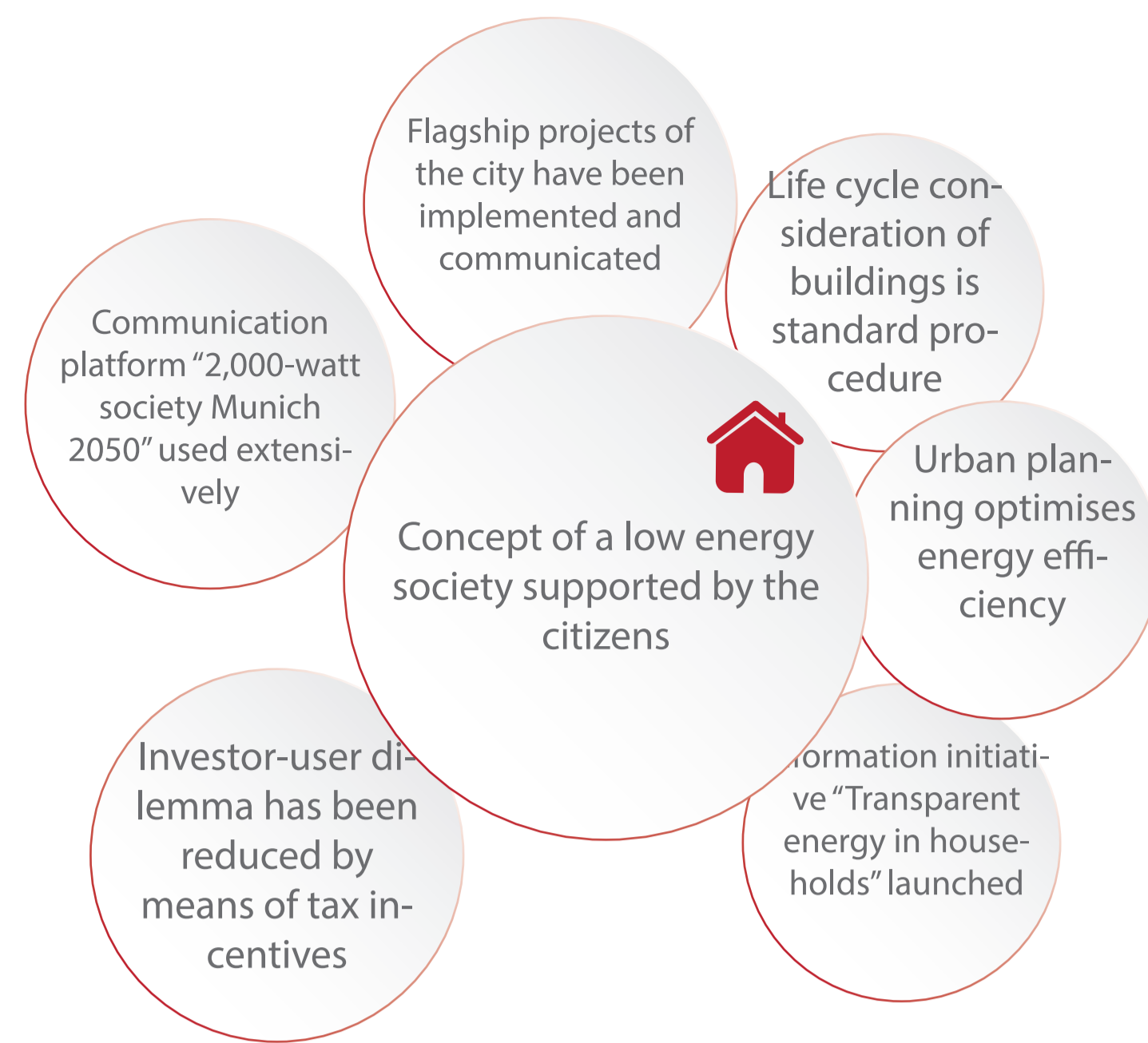
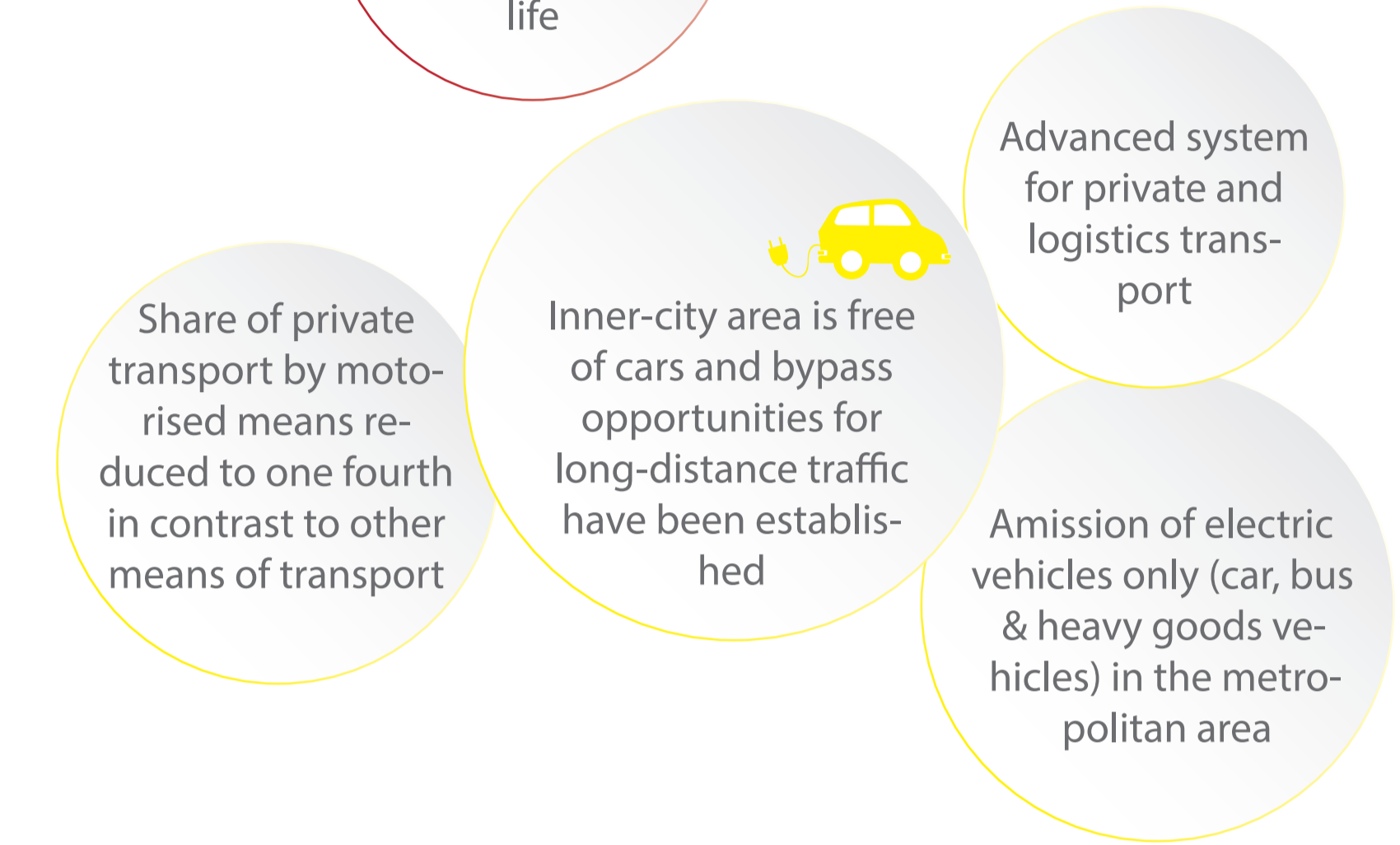
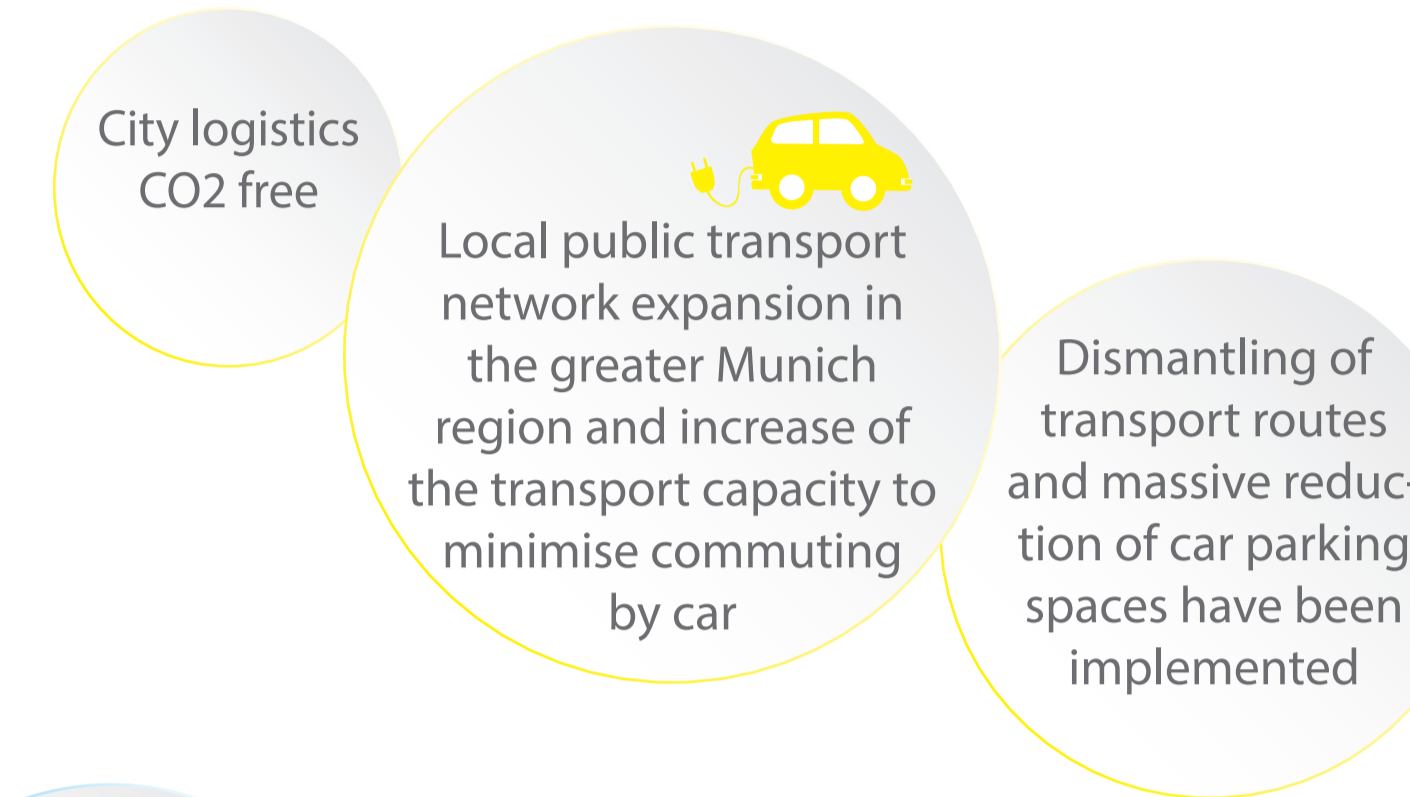
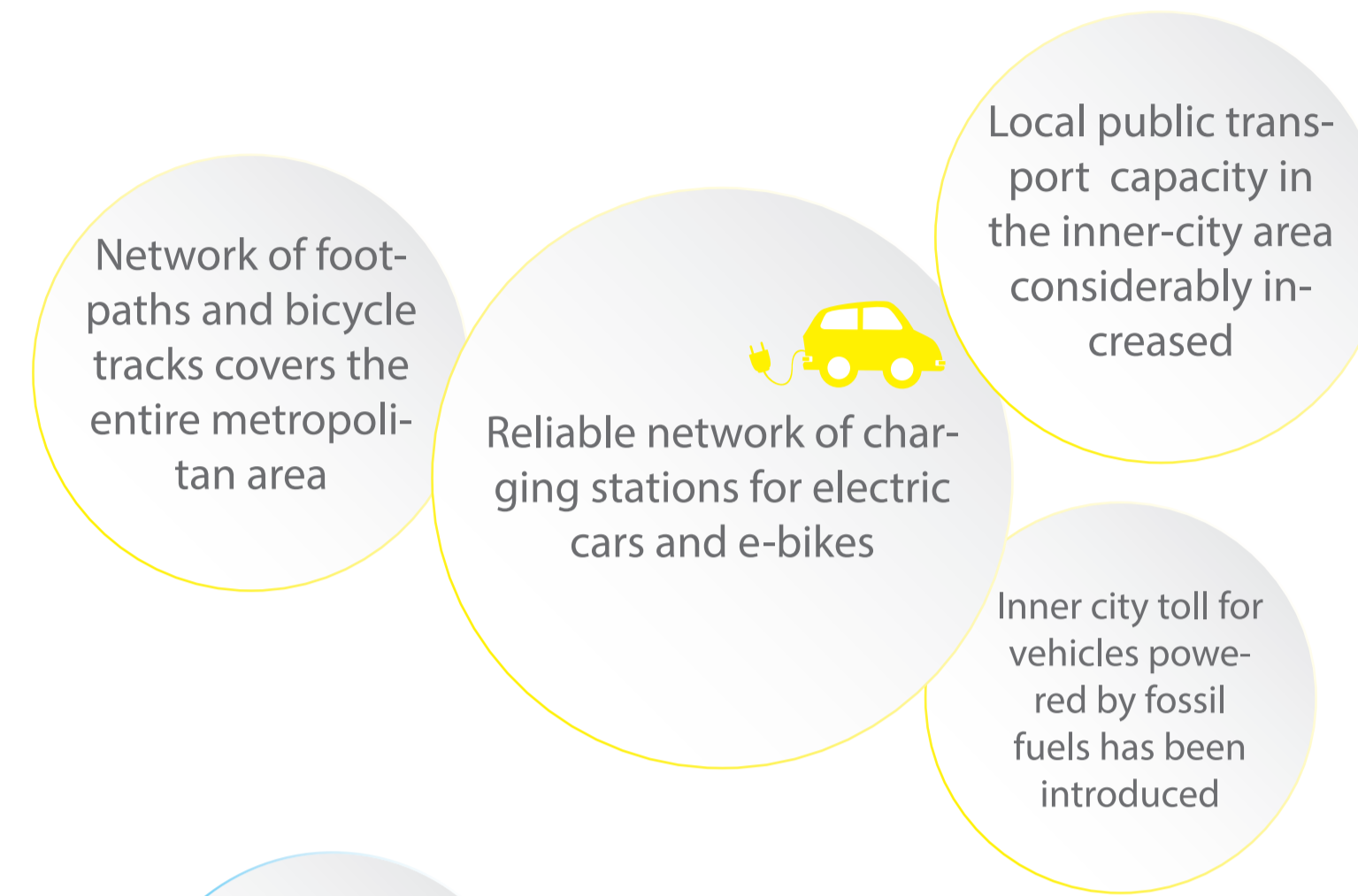
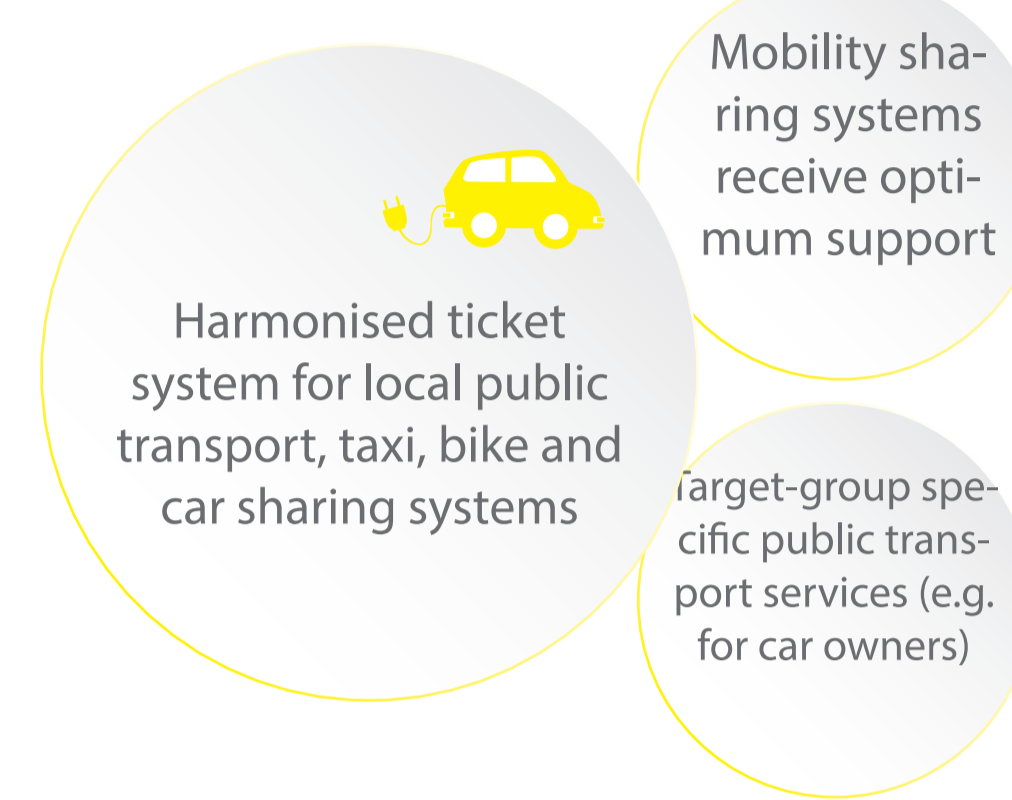


ELEMENTS OF AN ENERGY ROADMAP FOR MUNICH 2050 *

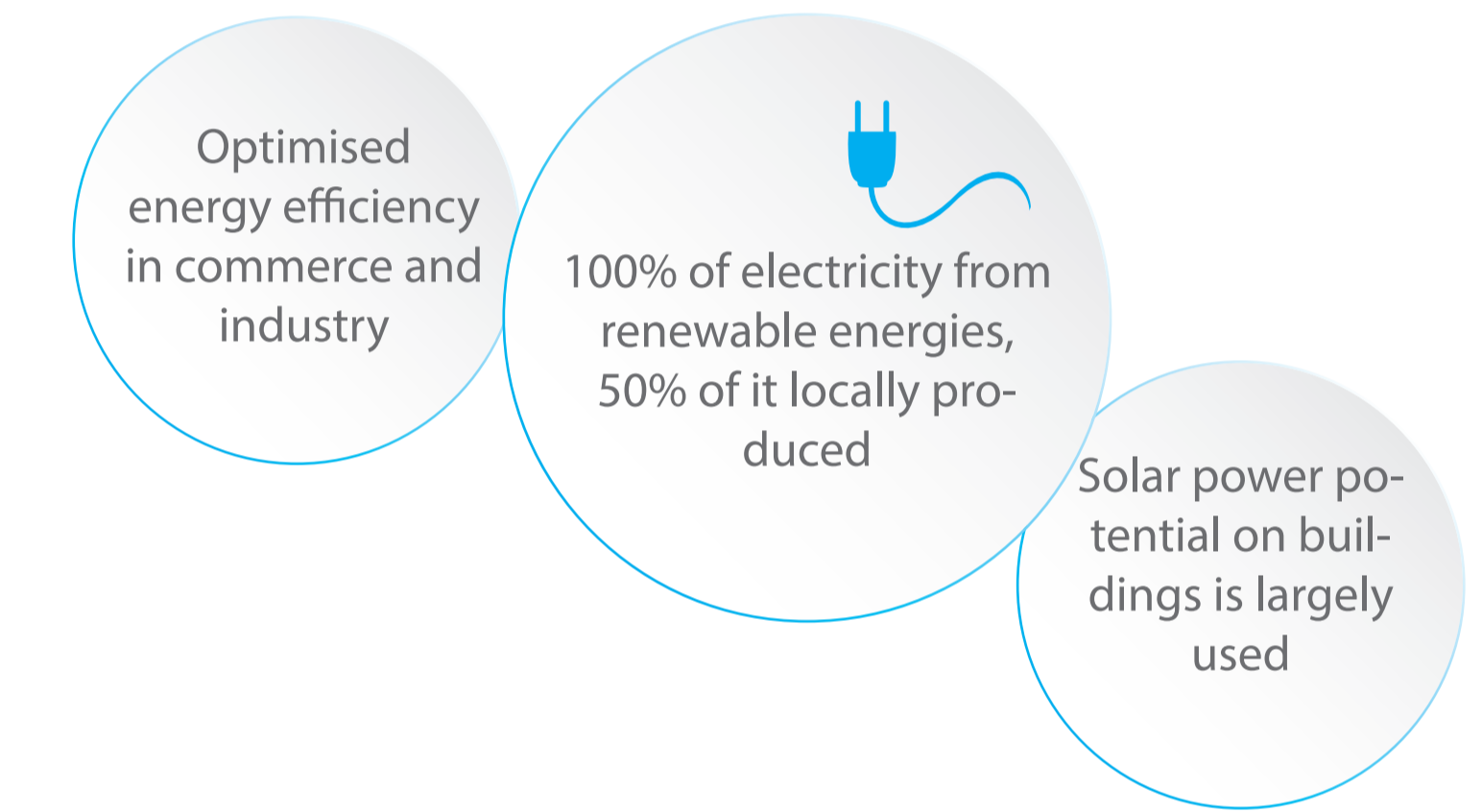
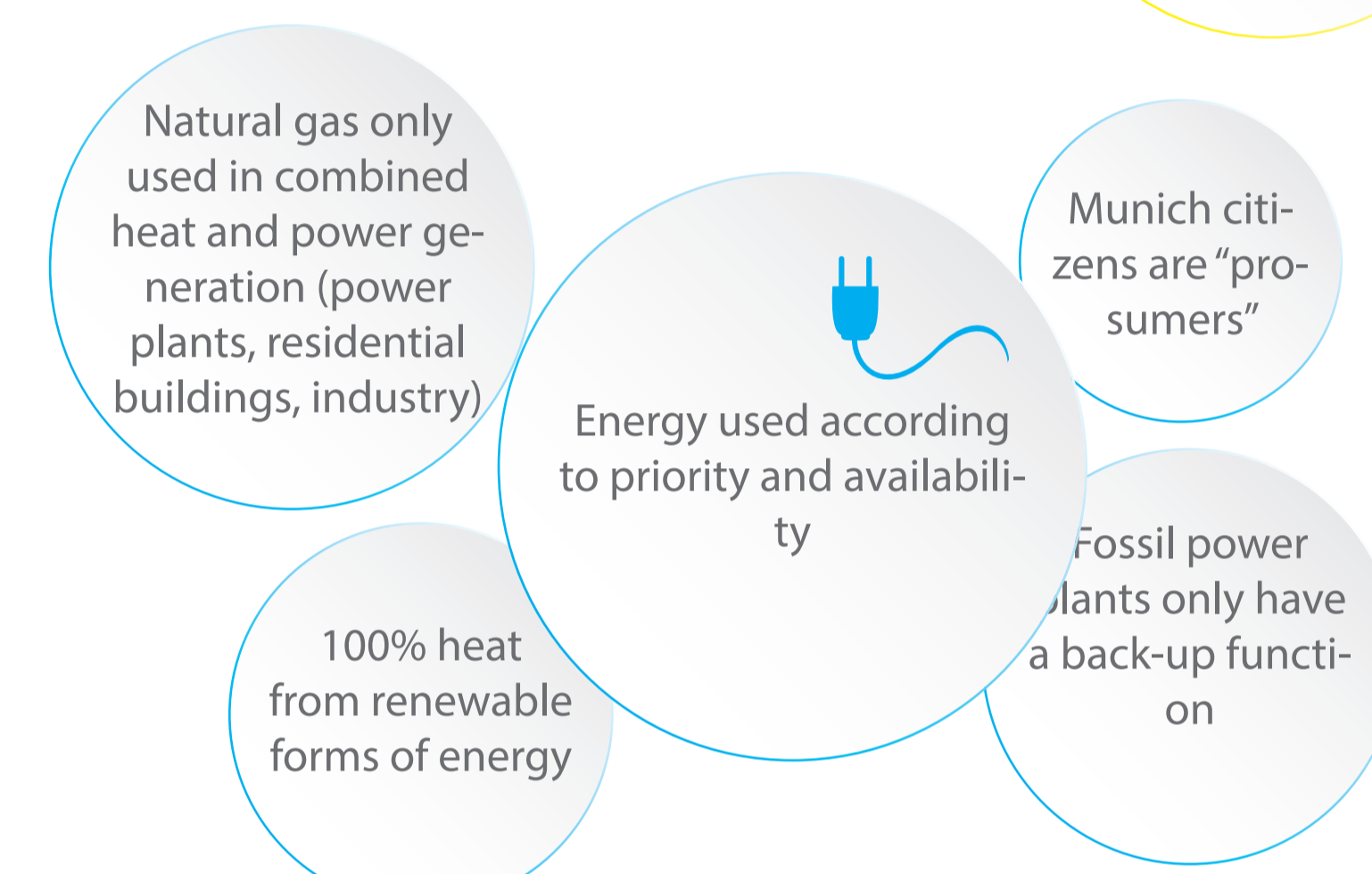
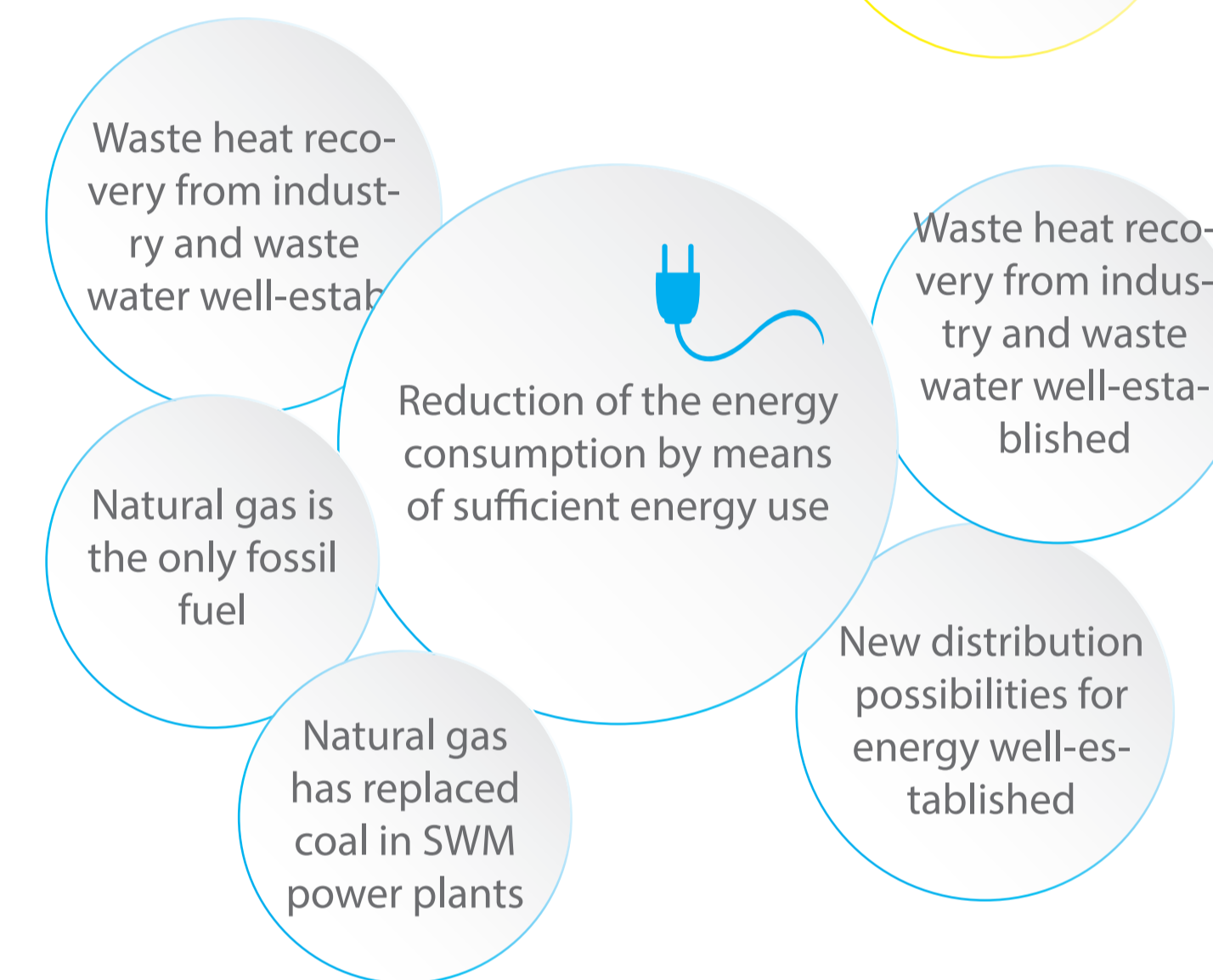
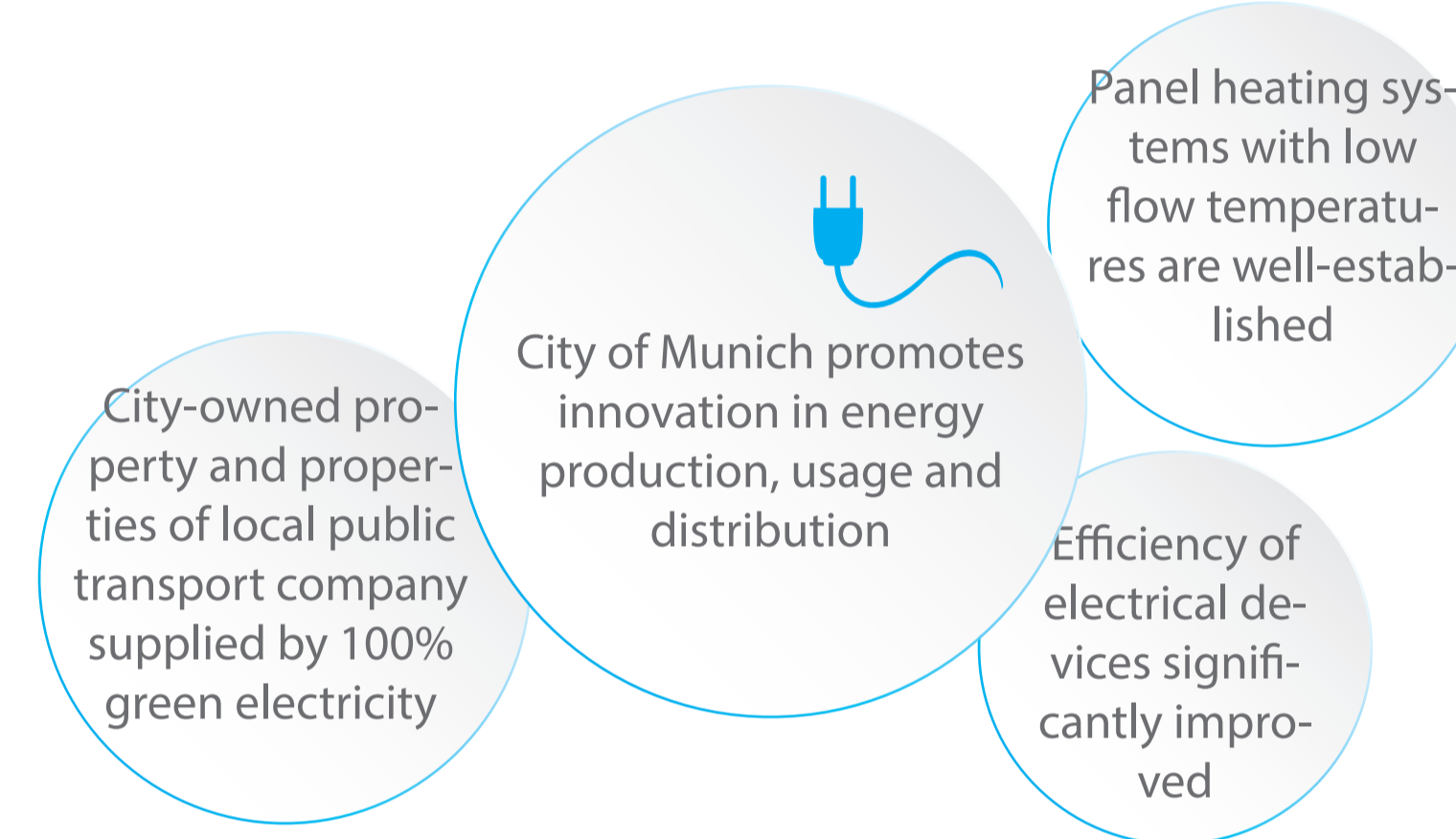
HOUSEHOLDS



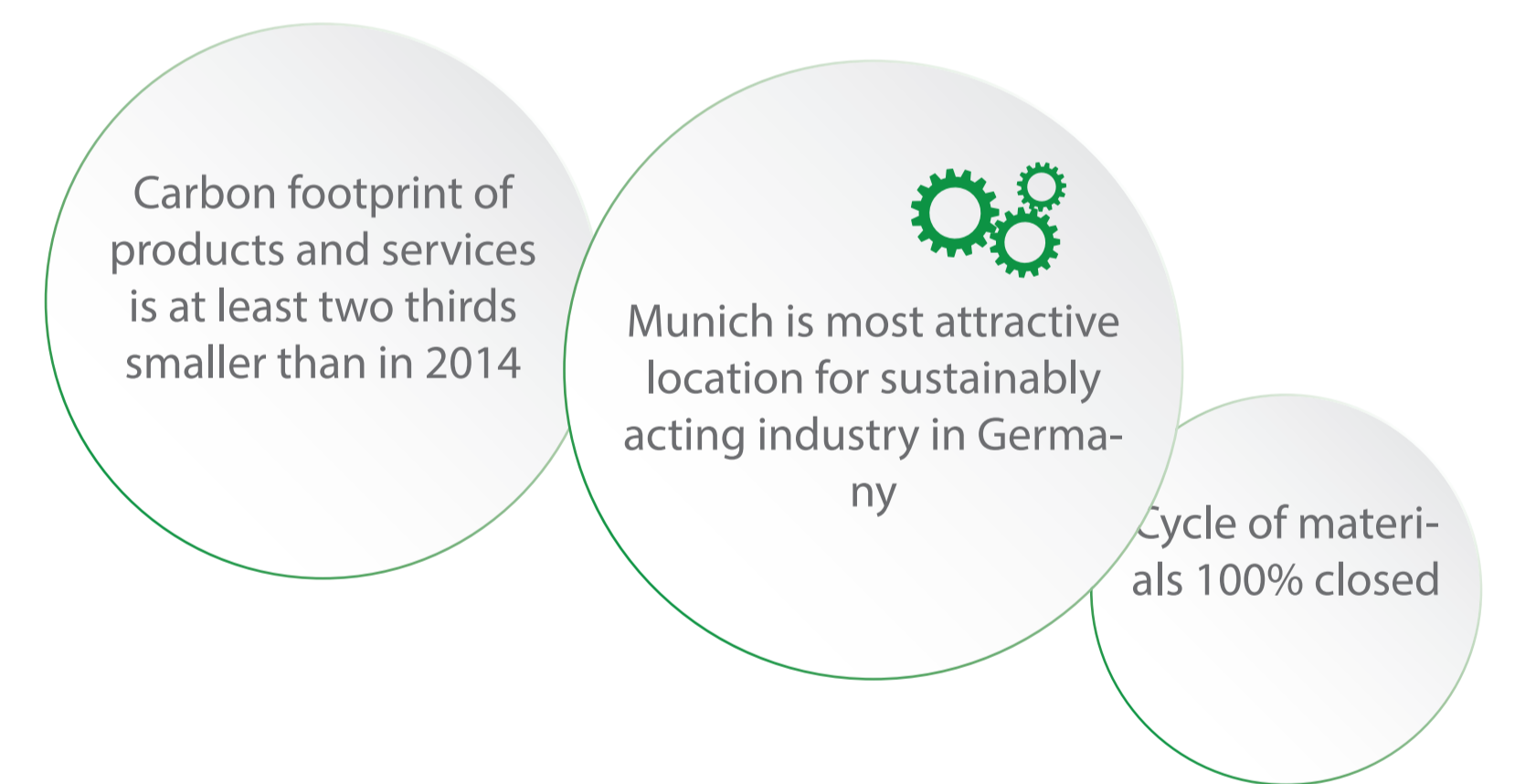
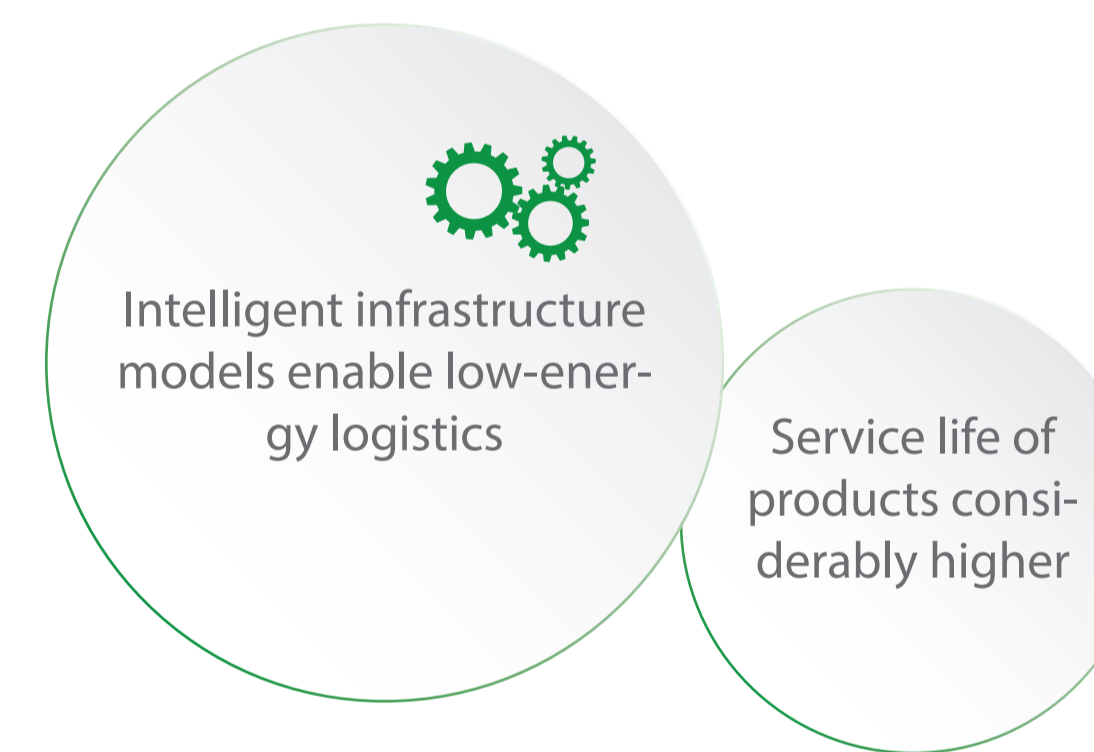
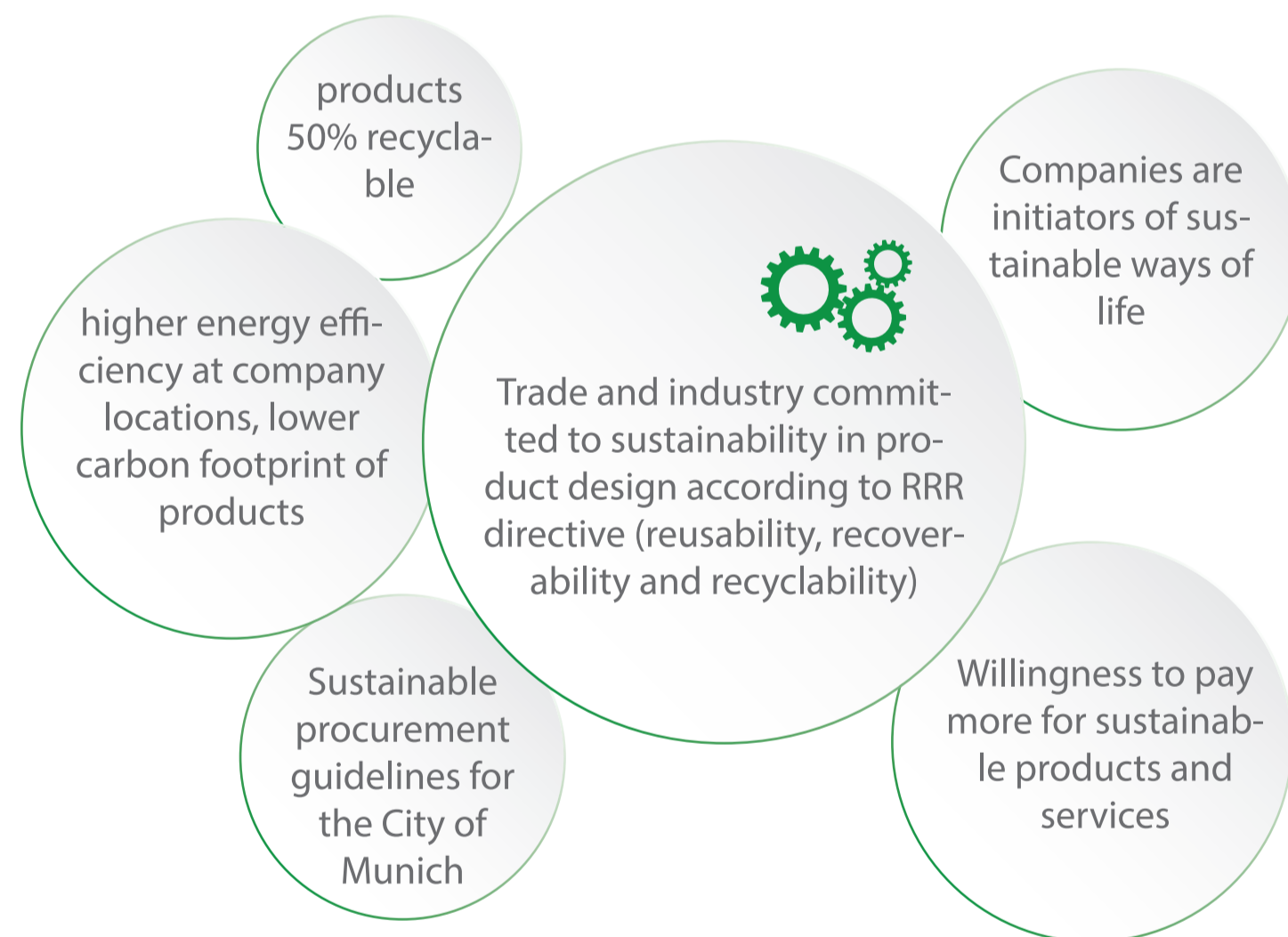
MOBILITY



ENERGY



ECONOMY



2020

- Munich is a 5,000-watt society
- Binding CO2 emission target for the City of Munich by 2050
- Introduction of a resource management system for all major infrastructure projects: analysis in terms of cost/benefit, resource consumption, CO2 effect (sustainability)
- Energy and sustainability concepts for all development areas are standard procedure
- City-owned new buildings must be nearly zero energy buildings (also applicable for municipal housing companies, private new buildings on city-owned land)
- An energy use plan for the entire metropolitan exists

2030

- Munich is a 4,000-watt society
- Municipal new buildings (municipal housing companies, private new buildings on city-owned property) must be passive houses or positive-energy buildings
- Resource management (see City of Munich/2020) well-established

2040

- Munich is a 2,500-watt society

2050

- Munich is a 2,000-watt society

2015: CO2 EMISSIONS FOR MANUFACTURER'S FLEET 30 G/KM
2020: 20% FEWER CO2 EMISSIONS
2020: 20% RENEWABLE ENERGIES IN TOTAL ENERGY CONSUMPTION
2020: 20% INCREASE IN ENERGY EFFICIENCY
2021: CO2 EMISSIONS FOR MANUFACTURER'S FLEET 95 G/KM

2030: 20% FEWER CO2 EMISSIONS IN TRANSPORT SECTOR COMPARED TO 2008
2030: 40% FEWER CO2 EMISSIONS

2040: 60% FEWER CO2 EMISSIONS

2050: 80-95% FEWER CO2 EMISSIONS
2050: 30% LESS PRIMARY ENERGY CONSUMPTION
2050: 60% FEWER CO2 EMISSIONS IN TRANSPORT SECTOR COMPARED TO 1990

2020: MINIMUM OF 1 MILLION ELECTRIC VEHICLES IN GERMANY
2020: 40% FEWER CO2 EMISSIONS & 10% LESS POWER CONSUMPTION
2022: NUCLEAR PHASEOUT

2030: MINIMUM OF 6 MILLION ELECTRIC VEHICLES IN GERMANY
2030: 55% FEWER CO2 EMISSIONS

2040: 70% FEWER CO2 EMISSIONS

2050: 80-95% FEWER CO2 EMISSIONS & 25% LESS POWER CONSUMPTION
2050: 50% LESS PRIMARY ENERGY CONSUMPTION

2015: SWM RENEWABLE ENERGIES EXPANSION CAMPAIGN - SUPPLY ALL HOUSEHOLDS IN MUNICH WITH GREEN ELECTRICITY
2025: SWM RENEWABLE ENERGIES EXPANSION CAMPAIGN - SUPPLY ALL OF MUNICH WITH GREEN ELECTRICITY

2030: TARGET FOR CITY OF MUNICH: 50% LESS CO2 PER CAPITA

2040: SWM 100% OF LONG-DISTANCE HEAT FROM RENEWABLE ENERGY SOURCES

Projektinitiative und -koordination:
imagine
energycities

Mit Unterstützung von:
INTERREG IVC
INNOVATION & ENVIRONMENT
REGIONS OF EUROPE SHARING SOLUTIONS



* These elements were developed during an experts' forum on 19 April 2014 with participants from For now, they are not binding yet and still have to be negotiated and agreed on by city politicians and urban society in a joint dialogue (on sustainability).