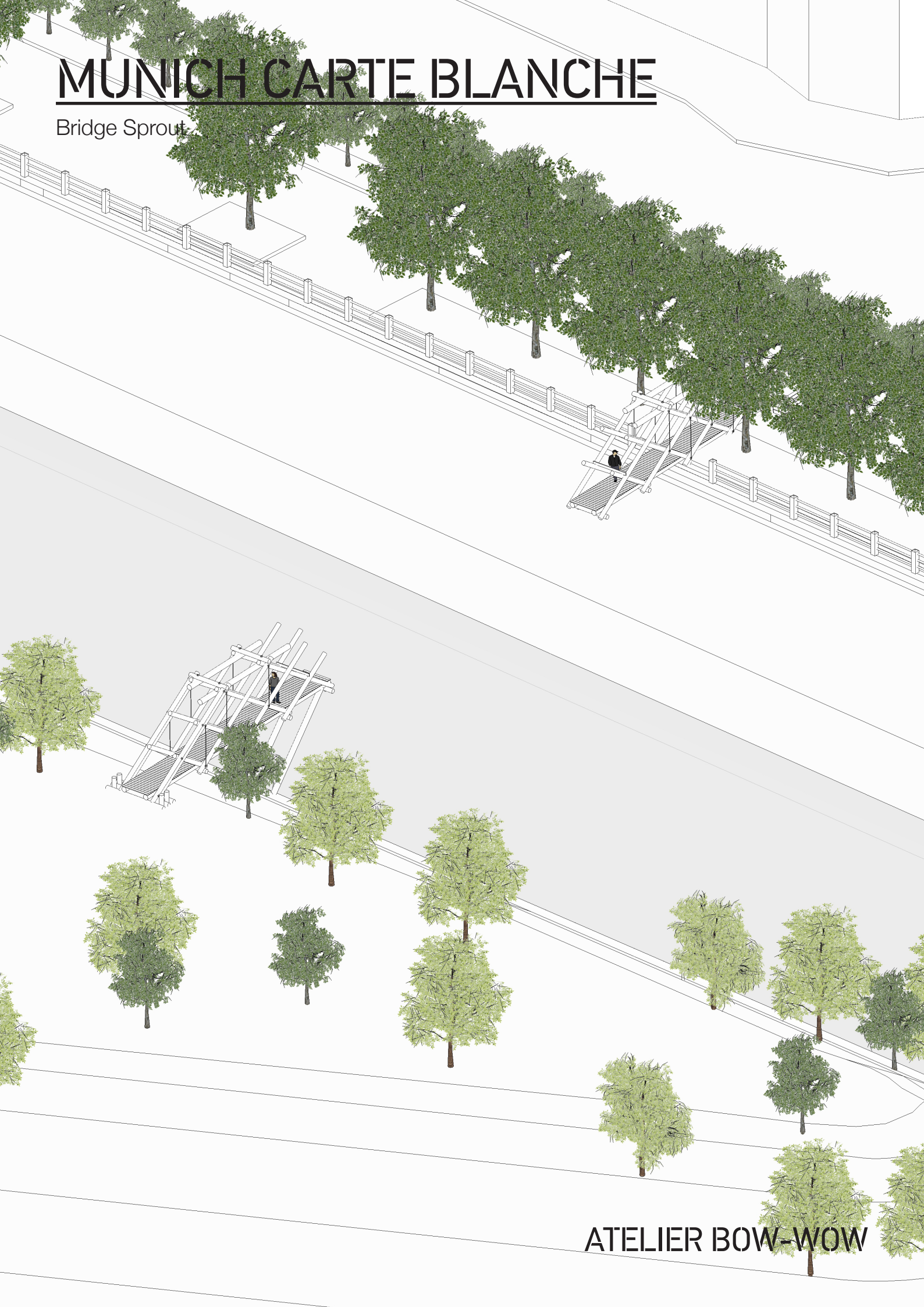


MUNICH CARTE BLANCHE

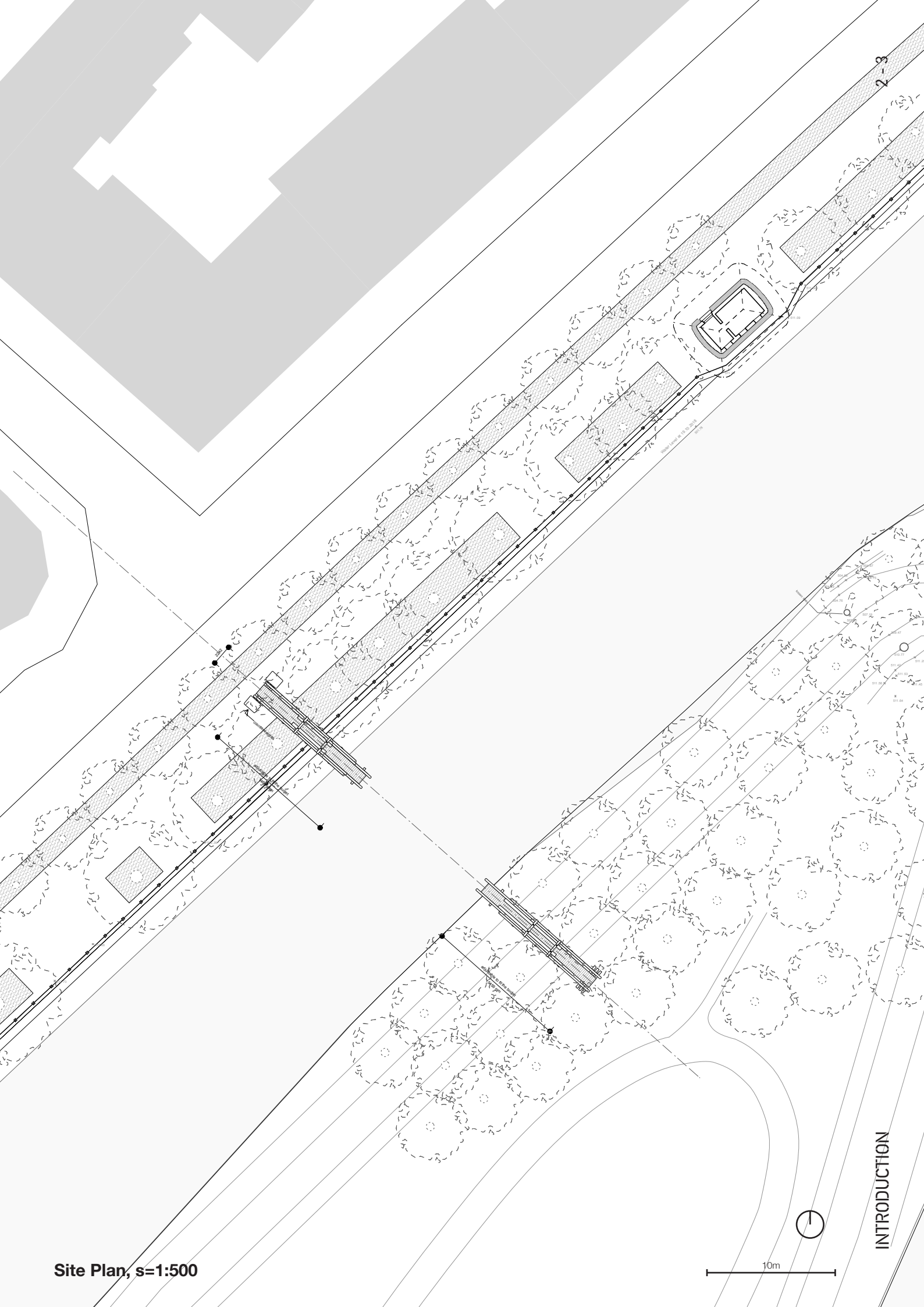
Bridge Sprout



ATELIER BOW-WOW



The Bridge Sprout



Site Plan, s=1:500

10m



INTRODUCTION

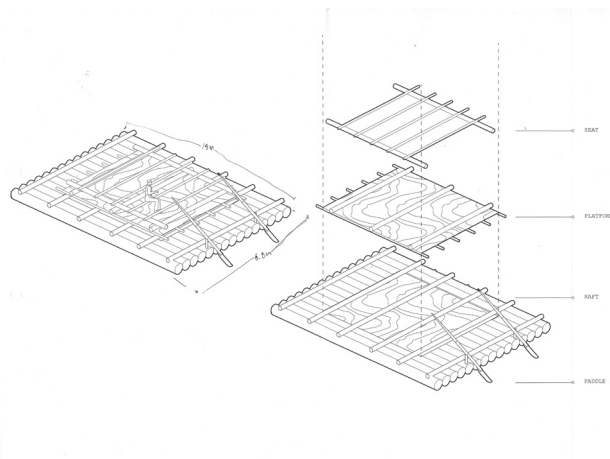
2-3



Munich, Cole Island - 1889



The Green Tree - Painting by Joseph Stephan - 1767



Traditional Bayern raft

MUNICH CARTE BLANCHE

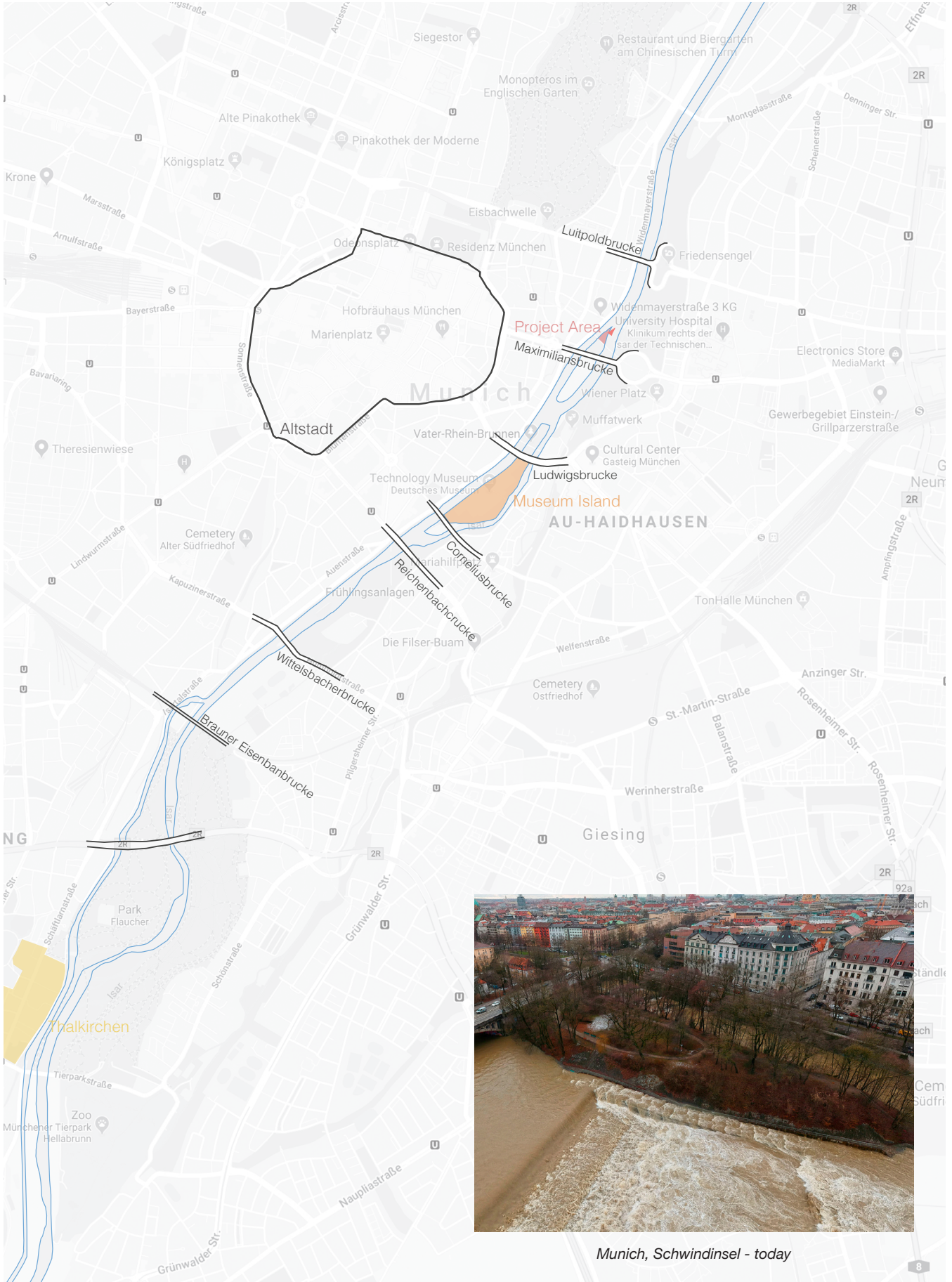
Bridge Sprout

The location of the “Bridge Sprout”, on the northern part of the Schwindinsel, expresses our interest to reconnect the city to the island. The Maximiliansbrücke, which is mainly designed for cars, doesn’t encourage the citizens to take advantage of the existing park, and leave the northern area of the island almost abandoned.

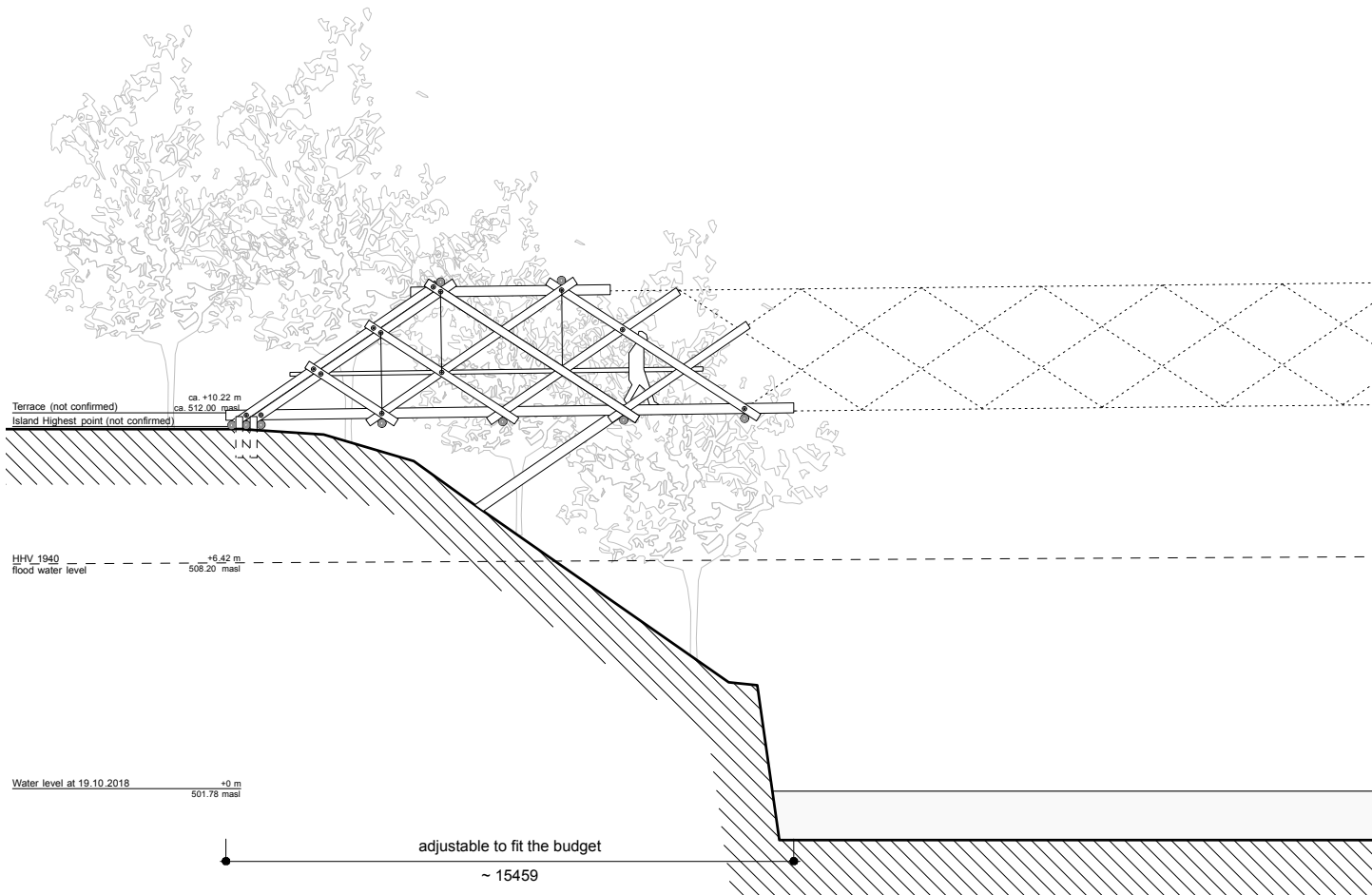
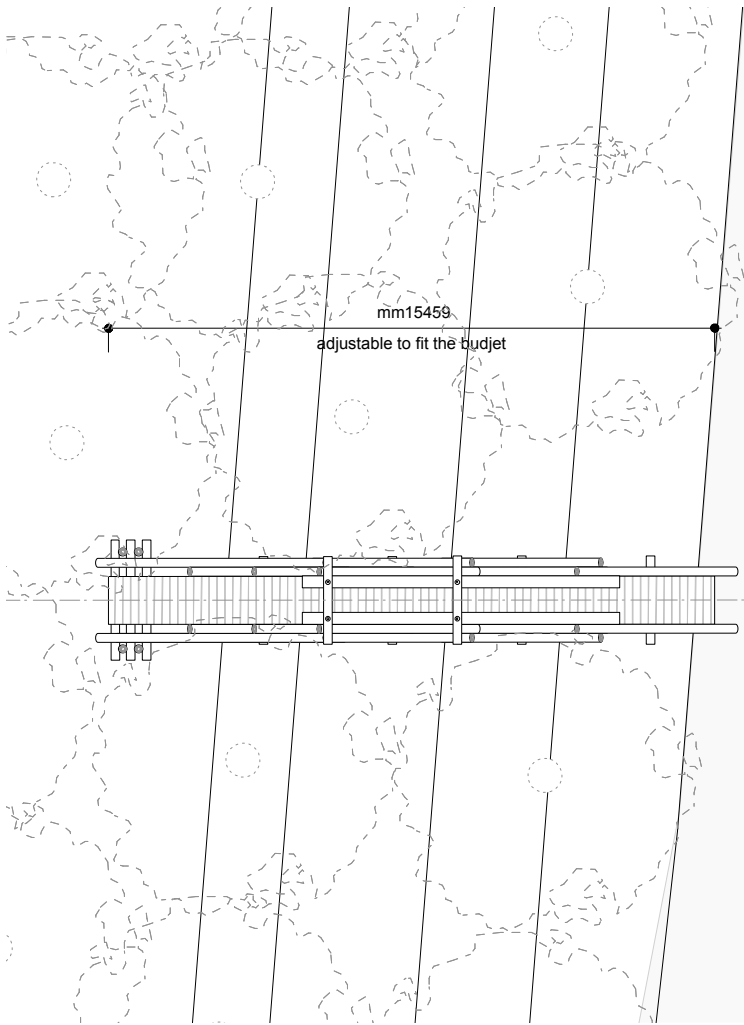
Until the beginning of the 20th century, a large part of the city’s economy depended on the trade along the river Isaar. The Kohlen Insel served as raft’s port for the city of Munich since the Middle Age, and was the destination point for all the goods that were entering the city, from lumber and coal coming from the surrounding forests, to wine and fruits from Italy and spices from the Middle East and Asia. The goods were transported along the river on wooden rafts, unloaded and stored on the island, and from there distributed to the rest of the city. At the end of the 19th century, the island was the largest raft harbor in Europe.

Our will, is to bring this part of the island back to life, by giving it more attention from the citizens. But in order to do so, do we really need a new bridge? The “Bridge Sprout”, expresses our wish to reconnect the city to the island in a very poetical way, like a tree that grows trying to reach the other side of the river.

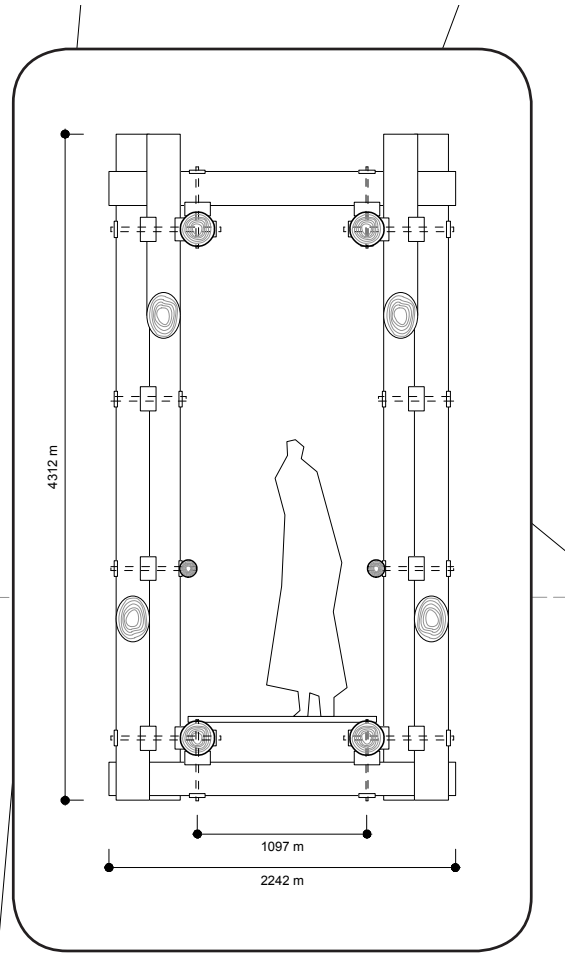
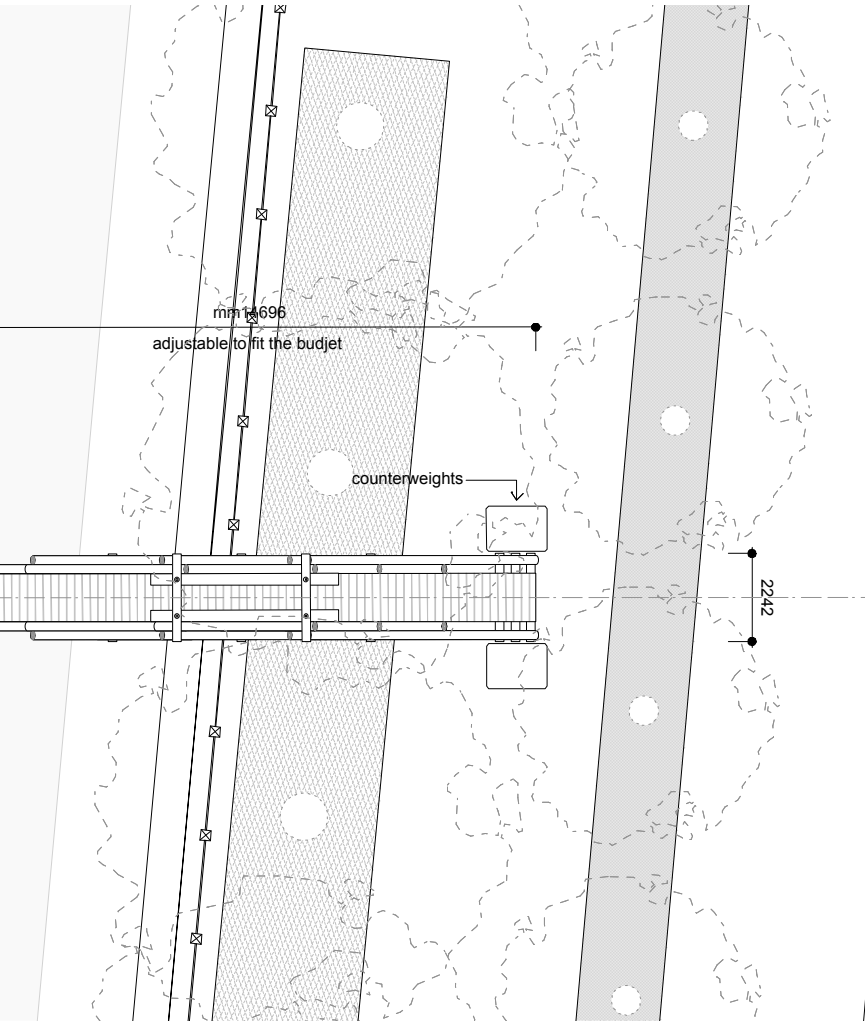
Given its strong connection with the historical network between the city and its mountains, the project will be realized with local wood. The logs recall the structure of the original rafts and their construction technique, and they emphasize the city’s lost connection with its surrounding forests.



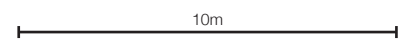
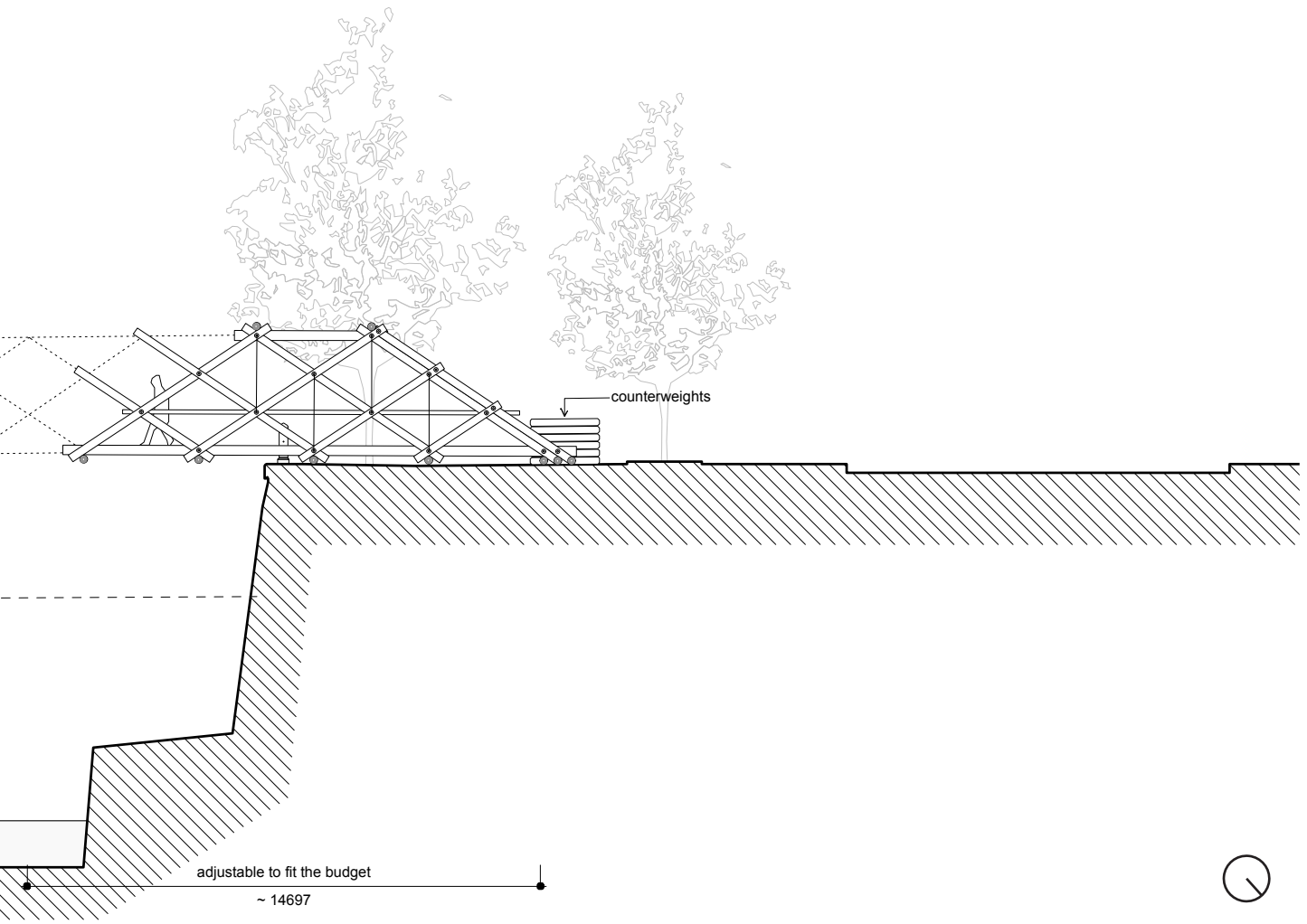
Munich, Schwindinsel - today

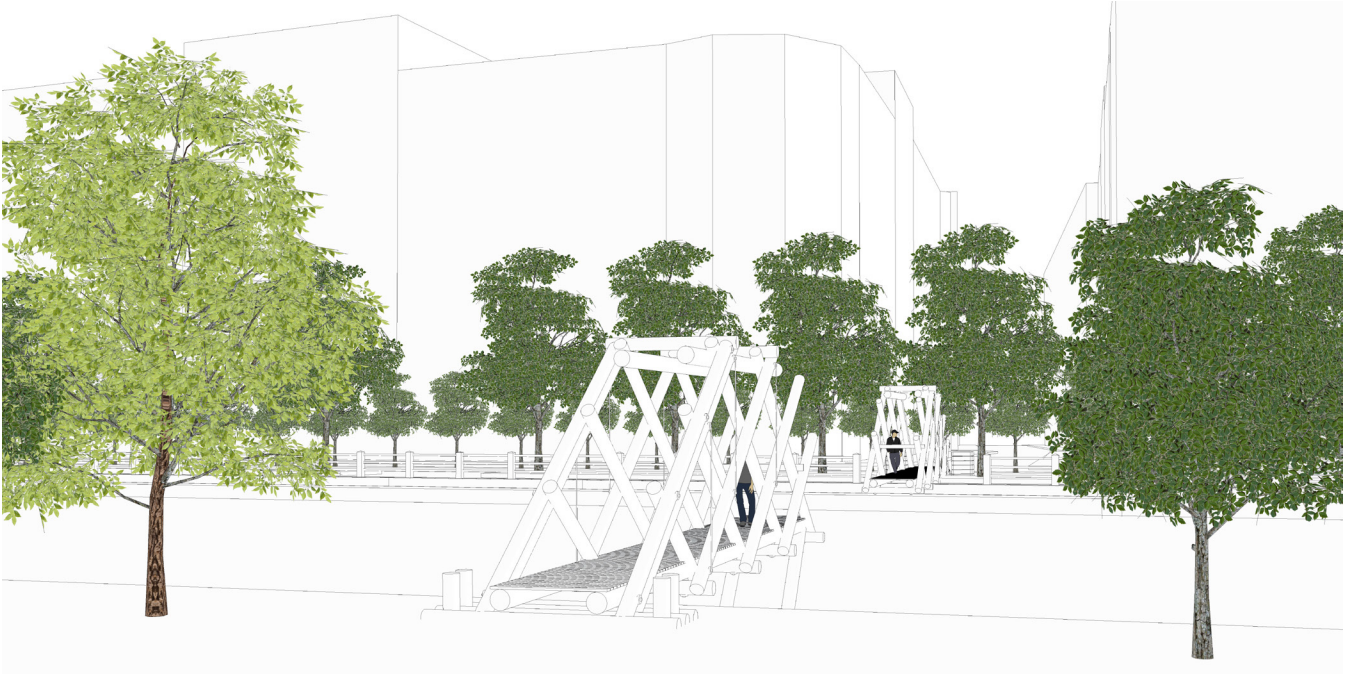


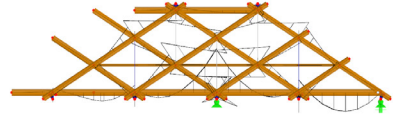
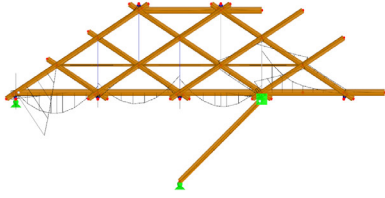
Plan, Section s=1:200



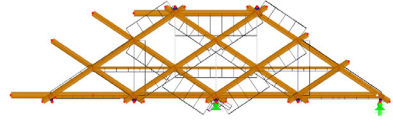
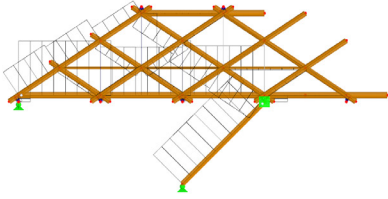
Detail, transversal section s=1:50



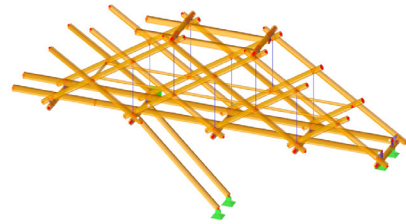
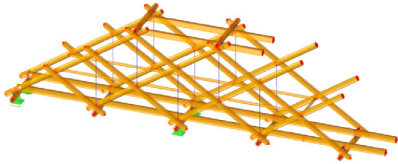




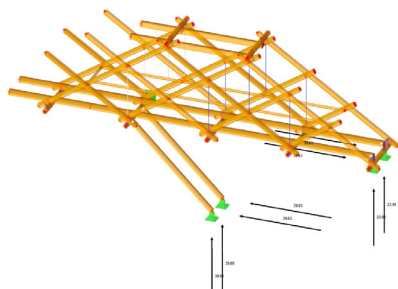
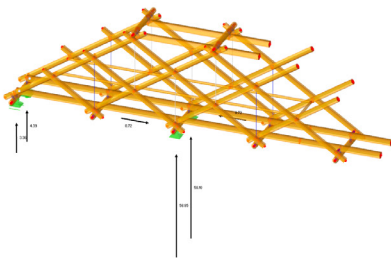
Bending Moments



Normal Forces



Structural System



Reaction Forces Supports

